

2a Mostyn Road
Bushey
Hertfordshire
WD23 3PN





Shield Homes Ltd specialises in the creation of exclusive residential homes of outstanding character and style in North London, Middlesex and Hertfordshire.

The company has a clear commitment to maintaining the highest standards at every stage of its operation, from the selection of suitable locations, through to the design, construction and completion of every home.

Engaging with imaginative and innovative architects and using quality materials with which to build, all interior décor and finishing is carefully coordinated for maximum effect.

The result is homes that blend traditional values with the best in up to date technology for stylish, comfortable modern living. Shield Homes philosophy is to create new and refurbished homes that enhance the prevailing environment, and accordingly great attention is given to the landscaping of grounds and gardens. Together with this Shield Homes follows all required building codes to provide comfortable energy efficient homes.

In terms of individual design, craftsmanship and traditional construction values a Shield home is a fine residence in which to live.





As long standing local developers Shield aim to build homes of unparalleled character and style.

2a Mostyn Road is Shield's latest project.

A brand new stunning & ultra-modern three bedroom, two bathroom detached family home, situated in a private road in Bushey, one of Hertfordshire's most desirable towns.

The ground floor accommodation comprises entrance hallway with storage cupboard and guest WC, reception room offering space for both seating and dining with bi-fold doors out to the rear garden and kitchen/diner featuring high gloss handleless kitchen with integrated appliances and space for a table.



Natural light floods the staircase via a pyramid roof light going up to the first floor where you'll find the master bedroom featuring a range of bespoke fitted wardrobes accompanied by a beautiful four piece en-suite bathroom, along with two further double bedrooms both serviced by a lovely three piece family bathroom.

Externally there is a private fenced driveway for two cars, rear patio, garden laid with lawn and bin storage.



Kitchen

- Luxury high specification 'Strada' handleless contemporary cabinets
- 'White Storm' Silestone Worktop
- Stainless steel sink with mixer tap
- Integrated Siemens dishwasher
- Siemens 5-ring gas hob
- Siemens extractor hood
- Siemens built in single fan oven
- Siemens built in single oven with microwave
- Integrated Siemens 60/40 A + rated fridge/freezer
- Waste disposal
- Integrated washing machine & tumble dryer

Bedrooms

- Fitted wardrobes in master

Bathrooms

- Tiles supplied by Porcelanosa
- Fully tiled walls and floor
- Vanity units by Roca
- Underfloor heating
- Heated towel rails

Flooring

- Wood effect tiled flooring on ground floor

Windows and Doors

- Front door – 'Hallmark' Aluminium
- Windows – Anthracite Aluminium
- Bi-fold doors to garden
- Internal doors – 'Linear Oak' with softwood architrave and skirting and chrome handles.
- Roof lights

Lighting

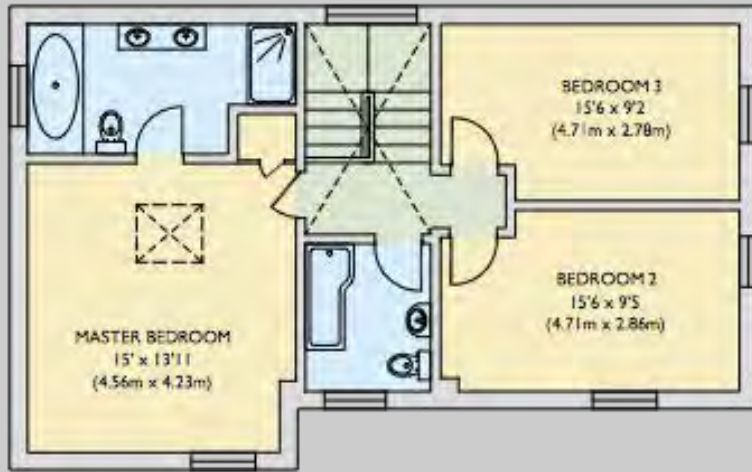
- LED downlights throughout

Landscaping

- Patio –Charcoal Paving slabs
- Lawn

Construction

- Brickwork – Lincoln Red
- Rendered finish - White
- 'Marley Eternit' Cladding - Pearl
- Gutters – Anthracite Aluminium
- Driveway – Block pavers
- Softwood staircase with glass panels
- Energy efficient gas fired central heating
- Internal walls painted in single colour emulsion throughout.
- Skirting, architrave and door linings in satin wood finish
- CRL Building Warranty



FIRST FLOOR



GROUND FLOOR



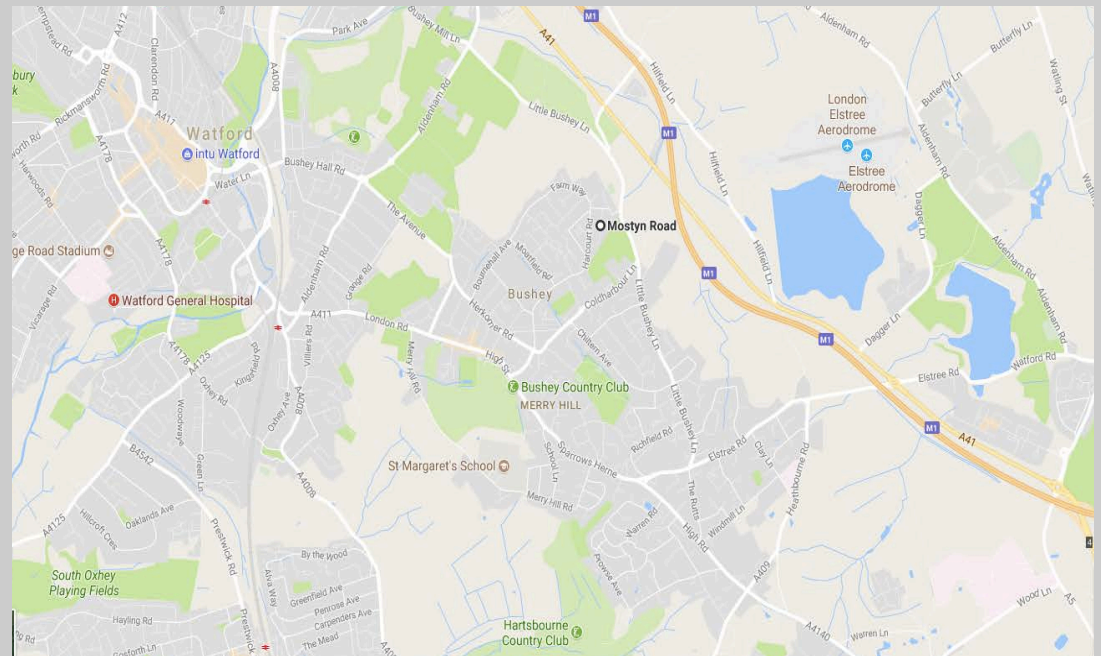
Transport Links

Car	
Bushey Heath High Road	7 mins, 1.8 miles
Bushey London Overground Station	7 mins, 2.0 miles
Stanmore Underground Station	15 mins, 4.4 miles
Intu Shopping Centre	11 mins, 4.0 miles
Brent Cross Shopping Centre	25 mins, 10.1 miles

Train	From Bushey Station
Watford Junction	12 mins
Wembley Central	10 mins
Willesden Junction	26 mins
London Euston	19 mins (Fast Train)

Baker Street	28 mins
Kings Cross St. Pancras	36 mins
Farringdon	40 mins
Liverpool Street	45 mins
Canary Wharf	52 mins

Airports	
London Luton	24 mins, 18 miles
Heathrow	29 mins, 22.7 miles
Stanstead	107 mins, 82.5 miles
London City	58 mins, 45.1 miles
Gatwick	66 mins, 59.6 miles



Times and locations are approximate only. Information taken from www.maps.google.co.uk & www.tfl.gov.uk

While every effort is made to ensure the accuracy of our particulars, they are intended as a guide only and their accuracy is in no way guaranteed. Photos and floor-plans are for illustrative purpose only and may be either CGI's or other developments by Shield. Appliances have not been tested. Prospective purchasers should satisfy themselves by inspection and relevant reporting of a property prior to purchase. This document does not form part of a legal contract.



Built by Shield

- Battlers Mews, Battlers Green Drive, WD7
- Garratts Road, Bushey, WD23
- Woodlands Road, Bushey, WD23
- Roundbush Lane, Aldenham, WD7

Shield Homes Ltd

0208 428 9147/07854 288 984

mark@shieldhomes.co.uk

www.shieldhomes.com



Company registration number 353 1852



SHIELD HOMES