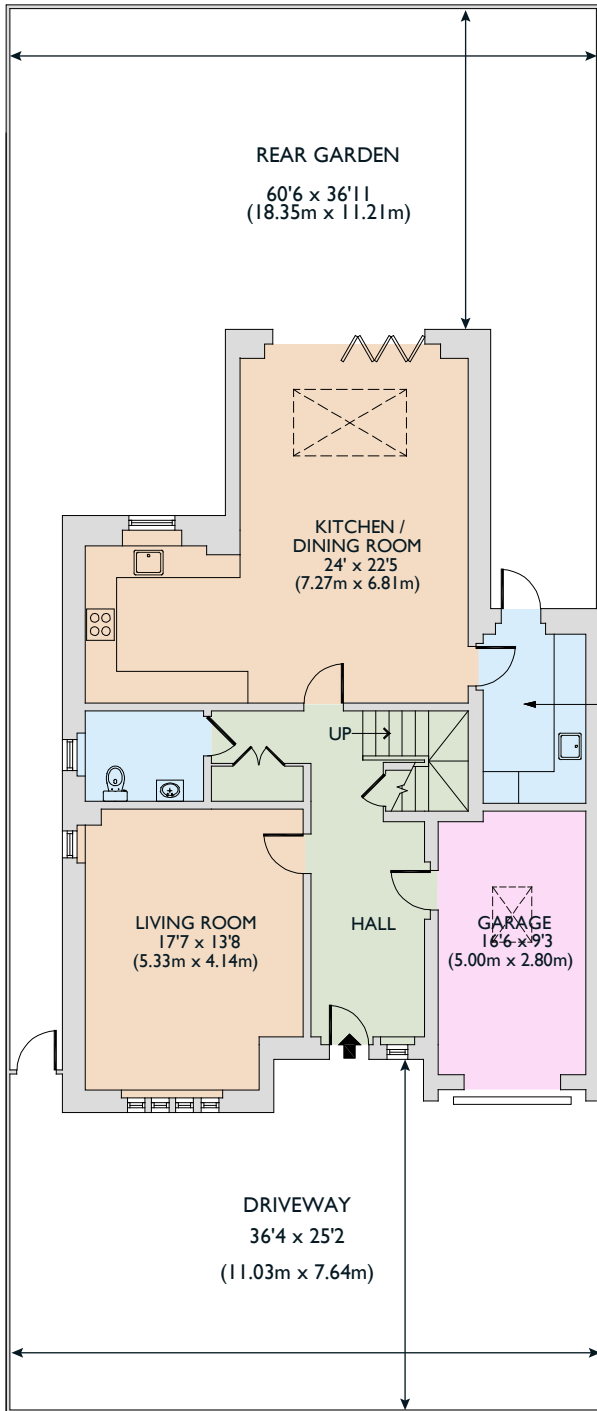
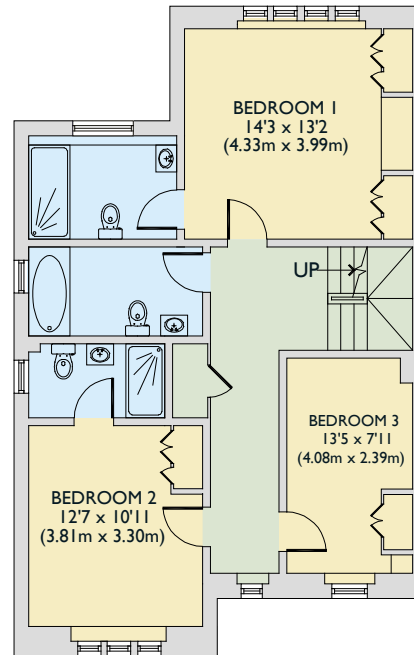


70 ROSEBERY ROAD  
 BUSHEY  
 HERTS  
 WD23 1DA

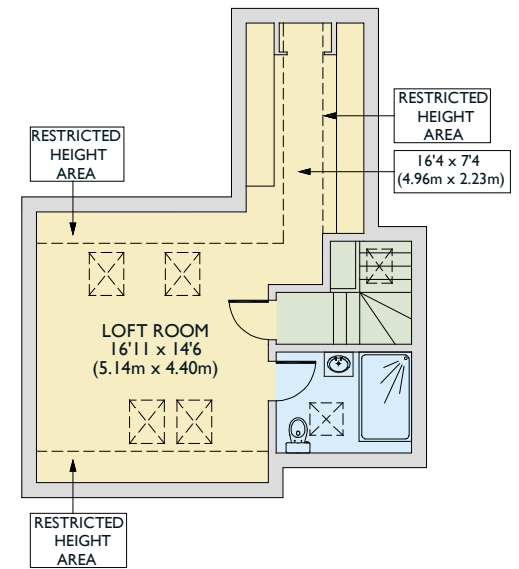


GROUND FLOOR

UTILITY ROOM  
 10'7 x 6'5  
 (3.21m x 1.95m)



FIRST FLOOR



SECOND FLOOR

Floorplan is for illustrative purposes only and is not to scale.  
 Every attempt has been made to ensure the accuracy of the floorplan shown, however all measurements, fixtures, fittings and data shown are an approximate interpretation for illustrative purposes only.  
 Liability for errors, omissions or mis-statement through negligence or otherwise is hereby excluded.