

Ground Floor

Lounge

15'11 x 10'6 (4.61m x 3.23m)

Dining Room

11'3 x 13'5 (3.44m x 4.11m)

Family Room

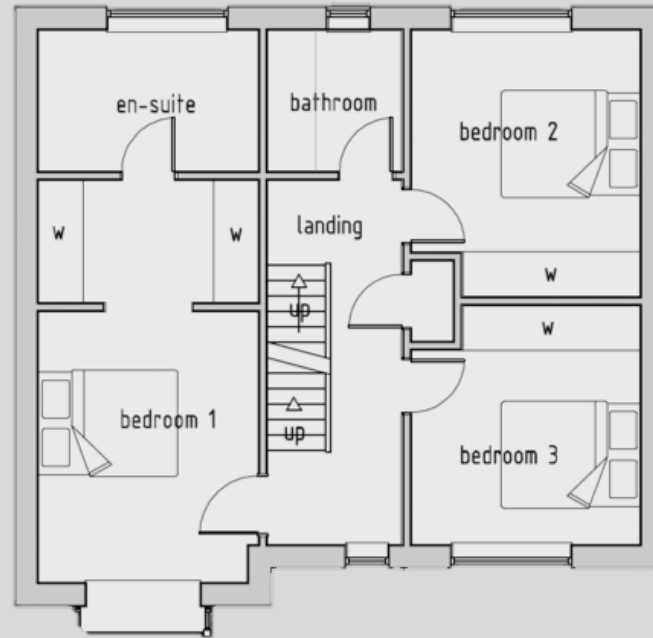
13'5 x 16'3 (4.11m x 4.97m)

Kitchen

11'9 x 12'7 (3.63m x 3.87m)

Utility Room

6' x 7'5 (1.83m x 2.29m)



First Floor

Bedroom 1

13' x 10'6 (3.96m x 3.23m)

Dressing Area

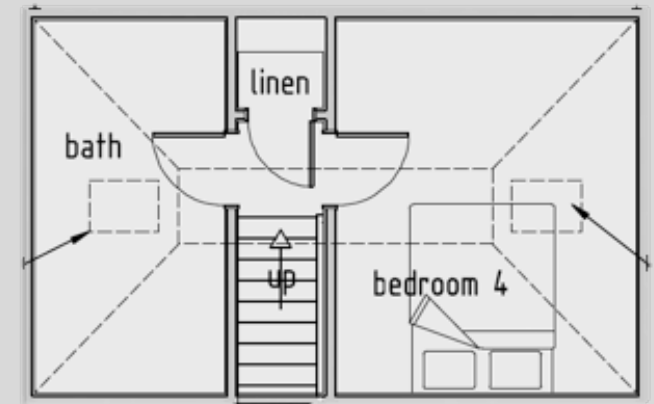
5'9 x 10'5 (1.80m x 3.20m)

Bedroom 2

12'10 x 11' (3.69m x 3.35m)

Bedroom 3

11'1 x 10'11 (3.38m x 3.08m)



Roof Area

Bedroom 4

13'1 x 10'5 (4.0m x 3.21m)

Bathroom

13'1 x 6'7 (4.0m x 2.04m)

Sizes include restricted head height.